

TRAINING INFORMATION

- To apply for a training visit our homepage www.cgisnur.org or write an e-mail info@cgisnur.org
- Coffee breaks (two per day), the training materials (on CD-ROM) and a certificate are included in the price.
- The minimum number of participants to conduct a training is five.

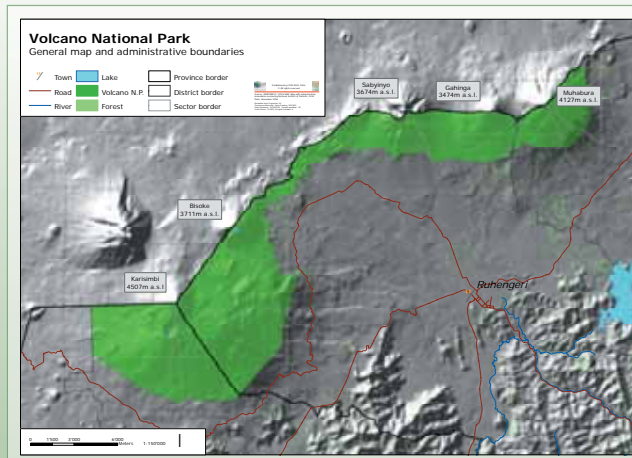


ABOUT CGIS-NUR

The Research and Training Center for Geographic Information Systems and Remote Sensing (CGIS) was founded in 1999 through an agreement between the National University of Rwanda (NUR) and the Dian Fossey Gorilla Fund International (DFGFI). In relation with the increasing importance and multiple applications of GIS and RS technologies in Rwanda, it became a permanent structure with an inter-faculty status in 2001.

The establishment of CGIS-NUR is part of the strategy of the National University of Rwanda to build ICT capacity and sustainable infrastructure that provides support to teaching, learning, research, management and community development to meet community, national and global developmental challenge.

The CGIS-NUR is now the leading institution in Rwanda that reflects the use of Geo-ICT for societal and economic transformation and sustainable development.



CONTACT INFORMATION

CGIS-NUR

Geographic Information Systems and Remote Sensing Centre
National University of Rwanda
P.O. Box 212
Butare
Rwanda

Tel: (+250) 551 08 551
Fax: (+250) 530 210
E-Mail: info@cgisnur.org

CGIS-NUR KIGALI OFFICE

CGIS-NUR Kigali Office
Telecom House, 5th Floor
Boulevard de L'Umuganda
Kigali
Rwanda

E-Mail: DemoCentre@cgisnur.org

For more trainings, visit our website at:
www.cgisnur.org

PARTNER



SHORT TRAINING PROGRAMME 2008

(JULY - OCTOBER)



LOIRET BUILDING
BUTARE (HUYE) - SOUTHERN PROVINCE
AND
TELECOM HOUSE BUILDING
KACYIRU - KIGALI

INTRODUCTION TO GIS

Participants learn fundamental GIS concepts and become familiar with the range of functionality available in GIS software. This course provides the foundation for becoming a successful ArcGIS Desktop user. ArcGIS software offers many tools for visualizing, creating, managing, and analyzing geographic data. Participants build up their ArcGIS skills in the areas of cartography, editing, geoprocessing and spatial analysis. In course exercises, they work with ArcGIS Desktop and see how it provides a complete GIS software solution.

Contents:

- Understanding basic GIS concepts
- Display spatial and tabular data
- Query data using
 - Attributes
 - Spatial relationships
- Data types and their properties
- Edit spatial and attribute data
- Working with tabular data
 - Joins and relates
 - Creating reports
- Using the Toolbox
- Data collection using a GPS / Add XY data to ArcMap
- Create Maps

Date: July 7-July 11, 2008

Closing date: June 20, 2008

Location: CGIS-NUR Kigali Office, Kigali

Trainer: Certified ESRI Instructor

Costs: USD 300.00

SOURCES

- Telecom House (Front Image):
©www.unido.org
- geography - gis: ©ESRI Inc., 2007
- Other Maps and Images:
©CGIS-NUR, 2008



CARTOGRAPHY TRAINING PACKAGE

When someone is using GIS, in most cases the output will be a map. To be able to create maps that are clear and convincing to those who will read them is therefore crucial. The CGIS-NUR offers a Cartography Training Package consisting out of two training sessions (*Basics & Advanced*) which discuss key design issues and teaches practical guidelines for creating maps that are well suited to their display medium and that speak effectively to their audience. Participants learn fundamental design principles and practice with the ArcGIS Desktop tools for creating high-quality maps.

You can participate in **both cartography courses for only USD500** (instead of USD600)!

CARTOGRAPHY & MAPPING WITH ArcGIS (BASICS)

Contents:

- Short introduction to Cartography
- Type of Maps
- Map design (layout, graphic design)
- Representation of topography and land coverage
- Generalisation
- Labelling
- Page properties, data frame, legend and graphic settings
- Map critique

Date: August 11-15, 2008

Closing date: July 27, 2008

Location: CGIS-NUR Kigali Office, Kigali
Trainer: Research Assistant, Institute of Cartography, ETH Zurich

Costs: USD 300.00

Supported by: **ETH**

Fidgenössische Technische Hochschule Zürich
Swiss Federal Institute of Technology Zurich



CARTOGRAPHY & MAPPING WITH ArcGIS (ADVANCED)

Contents:

- Basics on Cartographic Modelling in ArcGIS-
- Map Design, Printing, ArcGIS Reader/Publisher
- Labelling - using the Label Manager
- Working with Map Topology
- Understanding Map Projections and coordinate Systems
- Online mapping versus high-end pre-print products

Date: August 25-29, 2008

Closing date: August 10, 2008

Location: CGIS-NUR Kigali Office, Kigali

Trainer: Certified ESRI Instructor

Costs: USD 300.00

GEOPROCESSING USING MODELBUILDER AND PYTHON

Geoprocessing (GP) is an essential aspect of GIS that provides the ability to analyze and process geographic data. GP tools can be accessed in ArcGIS via dialog boxes, the command line, or visual workflow models. ModelBuilder provides a graphical modeling framework for designing and implementing geoprocessing models that can include system tools, scripts, models, and data.

Contents:

- Using the Toolbox
- Basics on Geoprocessing with ArcGIS
- Creating, editing, and running Models
How to make models more dynamic by exposing model parameters and working with environment settings and variables
- Validating, repairing, and documenting models to share with others

Date: September 29-October 3, 2008

Closing date: September 14, 2008

Location: CGIS-NUR, Huye

Trainer: Certified ESRI Instructor

Costs: USD 300.00